



## SOLUTIONS

Our Stealth Mark<sup>®</sup>, StealthFire<sup>™</sup>, and Crimestopper brand products can deliver everything needed to protect your products, brands, and supply chain from unauthorized activities such as counterfeiting, diversion, tampering, and substitution. They also can provide complete security solutions for the protection of your assets; whether those assets be commercial products, or items of value within a residence.

Follow the links below to determine the security solution that's right for you.

- **Security Labeling** – security labels, seals, and tape products that integrate our encrypted microparticles with the most advanced security print technologies available. All products utilize holographic imagery, microprinting, serialized barcoding, UV printing, and more to provide the ultimate security for your products. Available in standardized off-the-shelf form, or fully customized to your specifications directly from **The Lauterbach Group**. Solid security for your products; ready to go.
- **Custom Marking** – non-label application methods custom tailored to your specific needs, such as the direct application of particle marks to products or items, or the specialized marking of bulk materials. These type applications can usually be implemented seamlessly into your current processes as our technology requires little in the way of equipment and training.
- **Asset Protection** – products designed specifically to provide forensic level proof-of-ownership of items, products, or valuables. Easy-to-use authentication available for use in either consumer or commercial applications.
- **Analysis Tools** – Our StealthFire<sup>™</sup> software tools, readers, and accessories that make the process by which a marked item, product, or material is authenticated simple and easy. Validate code anywhere, anytime. No need for lost time waiting for lab work, or expensive testing.
- **Consulting Services** – Looking for answers to your security needs but aren't quite sure where to start? We offer consulting services to assist you in designing a solution that will provide solid security to your brands with minimal disruption to current processes, and recovers lost revenue instead of breaking the bank..

## SOLUTIONS



## Stealth Mark® Security Labeling



Introducing the most advanced security marking products available!

- **Product Authentication Labels**
- **Bottle Seals**
- **Tapes**
- **Carton Seals**
- **Custom Labeling**

Stealth Mark, in partnership with **The Lauterbach Group**, is pleased to announce a new line of Security Labeling products. **The Lauterbach Group's** brings to bear its state-of-the art printing capabilities, which combined with Stealth Mark's encrypted microparticle technology, delivers a true powerhouse of security features into every roll of Stealth Mark® brand labels, seals, or tapes.

These labeling products provide true brand protection from counterfeiting and diversion yet maintain the easy to use product identification and tracking capabilities of bar coding. No other label on the market today combines so many features in such a cost effective and easy to use label. All products can be applied manually, using handheld applicators, or by employing currently available auto-apply equipment.

- **Unique Serial Number**

All security labels are printed with 16-digit, serialized numbers, unique to each label, incorporating check digit technology for increased scanning accuracy. The unique serial numbers allow the labels to be used to serialize products for tracking and tracing operations, such as recording the serial numbers of the products moving through a suspected diverters operation.

- **Bar Code**

Each label utilizes globally recognized Code 128 bar code symbology to create and read the unique serialized number for each label. This allows quick and easy scanning in any location with virtually any bar code scanner available. Both the



bar codes and the serial numbers are printed in black on a white background for ease of reading and scanning.

- **Tamper Proof Substrate**

All security products incorporate a tamper-proof substrate. This substrate, and associated adhesive, prevents the removal and reapplication of the Security Label. Any attempt to remove a label will cause the label to fragment into non-usable segments. The label is designed such that it can still be identified and validated with only a small portion of the label remaining.

- **Encrypted Microparticles**

For bullet-proof authentication the labels incorporate Stealth Mark<sup>®</sup> encrypted microparticles into sections of the label, creating a unique coded mark. This area of the label can be read using StealthFire<sup>™</sup> analysis tools to instantly determine the code; validating the absolute authenticity of the label and product. The presence of microparticles and their associated code provide forensic level validation of authenticity.

- **Holographic Imagery**

Utilizing the latest high-quality equipment holographic images are incorporated onto the outside banding of the labels, providing an overt security feature that can quickly and easily be reviewed by the human eye for validity.

- **Micro Printing**

This printing occurs in several locations of the label and provides still another layer of covert security. Much of the data for the label, such as the serial number, is incorporated in the micro printing as a cross check and back up security feature

- **UV Invisible Ink**

As a final quick check each label also contain printings in UV readable ink. A quick scan with a UV light will perform a quick initial validation of the Security Label. The UV printing in no way interferes with the other features in the label.

## **SOLUTIONS**

### **Stealth Mark<sup>®</sup> Product Authentication Labels**

Looking for an easy to introduce, yet effective security product to combat the ever-present threat of counterfeiting? Our Product Authentication labels are designed to do just that!



These fully serialized, off-the-shelf security labels measure 1.4375" in width and 0.50" in height and can be easily applied to existing items, products, or packaging with minimal impact to appearance. To prevent removal and re-use they are specifically constructed to fragment if removal is attempted; destroying the label. They come ready to use, in roll format, and can be easily applied manually, with a handheld label gun, or fully automated using any multitude of currently available label applicators.

Stealth Mark<sup>®</sup> Product Authentication labels integrate seamlessly into the normal course of production, just as your traditional labels always have. There's no disruption to your manufacturing or packaging operations; just a major disruption to those individuals trying to capitalize on your brand integrity!

Product Authentication labels can be particularly useful in situations where unauthorized production from contracted manufacturing is suspected. In these cases, you can provide the contract manufacturer with a specific number of serialized labels; equal to the number of units or products authorized for production. If the contract manufacturer is producing units or products above the authorized number, they will be devoid of the authentication label and can be quickly identified as counterfeit in the marketplace. If a counterfeiter attempts to produce a phony Stealth Mark<sup>®</sup> authentication label, our StealthFire<sup>™</sup> software can immediately identify the label as a fake as the microparticle code within the label cannot be duplicated.

Stealth Mark<sup>®</sup> microparticle technology integrated with cutting-edge printing expertise. Solid security in a easy to use label format. Available only through [The Lauterbach Group](#).

Impressed with the technology but looking for your companies name on the label or a special size? No problem, try our [Customized Labeling](#) for a exact fit to your needs.

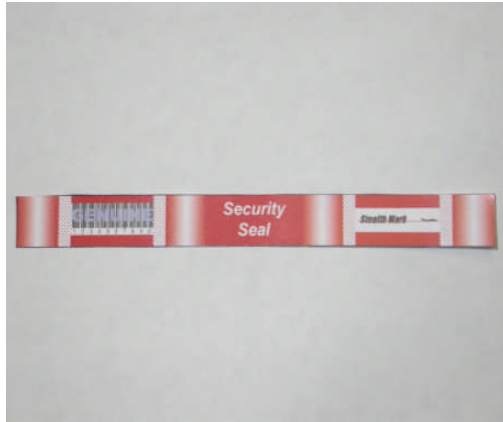
## SOLUTIONS

### Stealth Mark<sup>®</sup> Bottle Seals

Bottle and jar seal labels are designed to secure a bottle or jar against tampering while providing the same authentication and tracking flexibility of our Product Authentication labels. The non-



standard shapes of bottles and jars sometimes make it difficult to apply a security feature. Our bottle seals solve this issue while still delivering full security for the product.



Bottle seals measure 5.0" in width and 0.5" in height and are applied by simply sticking the center of the seal to the bottle top and then folding down and sticking the ends to the bottle neck. The size of the label makes it ideal to secure odd shaped containers such as those used in cosmetics or in pharmaceutical packaging. Any attempt to remove the cap destroys the seal. Simple yet effective.



Stealth Mark<sup>®</sup> Bottle Seals can be easily be applied in the normal course of bottling. There's no disruption to your manufacturing or packaging operations. Available only through [The Lauterbach Group](#).

As with our any of our other standard marking products, we also offer [Customized Labeling](#). Any Stealth Mark<sup>®</sup> security labeling product can be printed with specified names, logos, sizes, or whatever is needed to fit your specific security requirements.

## SOLUTIONS

# **Stealth Mark**



## **Stealth Mark<sup>®</sup> Security Tape**

Designed as a direct, off-the-shelf replacement for carton sealing tape, Stealth Mark<sup>®</sup> Security Tape can secure any package, box or envelope—even shipping containers ranging in size up to the largest ocean-going cargo containers!

Security tape comes in rolls of standard 2.0" width, with a continuous series of serialized bar codes at every 6" of length. The tape incorporates the full breadth of security features used in all Stealth Mark<sup>®</sup> security products and can be applied in the normal course of packaging and shipping, just as if you had done with traditional tape. There's no disruption to your packaging or shipping operations.



Stealth Mark<sup>®</sup> Security Tape is particularly useful in securing shipments of goods into government and military installations where the threat of terrorism may be high. Also, it can be used effectively by customs officials for validating incoming shipments at major land and sea ports, through which a significant volume of counterfeit goods pass.

Once a package is sealed with Security Tape, if an even higher level of security is desired, a shipper can record a specific Stealth Mark<sup>®</sup> microparticle fingerprint based on the location of particles found within the tape. This information would then be forwarded to the receiving party. Upon receipt, the receiver can easily authenticate the package, and if not genuine, they can reject the shipment.

Available only through [The Lauterbach Group](#). As with our any of our other security labeling products, we also offer security tapes made specifically to your requirements. Please see our [Customized Labeling](#) section for details.

## **SOLUTIONS**

### **Stealth Mark<sup>®</sup> Carton Seals**

Carton Seal labels are created specifically to provide the authentication and tracking flexibility you need to assure your products aren't tampered with. The labels are serialized, 2" diameter



round labels designed to fold around the outside edge of the carton flap, requiring breakage of the seal if the carton contents were tampered with.

As true with all Stealth Mark<sup>®</sup> standard products Carton Seals are constructed to fragment if removal is attempted.



Available only through [The Lauterbach Group](#).

Think that Carton Seals are what your searching for but would prefer to have a different size or your company logo on the seals? No problem, try our [Customized Labeling](#) for a exact fit to your needs.

## SOLUTIONS

### Stealth Mark<sup>®</sup> Customized Labeling

While our Stealth Mark<sup>®</sup> Security Labeling excels in security features, you may be searching for something in a special size or shape, or security labeling featuring your company colors or logo. Search no more!

Our Custom Marking Products are identical, in terms of security technology, to our standard Stealth Mark<sup>®</sup> labels, seals, and tapes but are customized to exactly match your specific requirements. We'll work directly with you to design tailor-make labels that both look great and provide top-notch security all in one affordable package.

Customization can include:

- Incorporation of the customer name, artwork, or logo into the labels or seals.
- Unique label geometry such as unique shapes or sizes to fit specific needs.
- Serialization specifically tailored for the customer.
- Specialized label presentation masks.

Customized Labeling products can be ordered directly from Stealth Mark or from [The Lauterbach Group](#)



## **SOLUTIONS**

### **Stealth Mark<sup>®</sup> Custom Marking**

There are many industries and products where security marking via labeling or seals may not be desired, or they cannot be satisfactorily utilized, due to the need for covertness, the product geometry, substrate issues, or in dealing in harsh environments. To this end we also offer our custom marking applications. These application approaches fall under two basic categories; Direct Application Marking, and Integrated Marking.

In either of these application types we will work directly with your company to engineer customized formulations and application technology as appropriate to meet the your specific needs. The nature of direct marking allows it to be very precise, yet be accomplished with a minimum of equipment and space, minimizing disruptions to current processes.

### **Direct Application**

Comprised of our encrypted microparticles suspended in a qualified liquid carrier solution, Stealth Mark<sup>®</sup> direct application products are custom engineered to your specific application requirements yet can easily pay for themselves many times over in recovered revenue. Our security solutions can be directly applied to virtually any type of product or material substrate.

To assure compatibility with processes, products, or materials our marking solutions can be formulated utilizing water-based, solvent-based, or UV sensitive materials, dependant upon the specific engineering requirements. The application methods are also tailored for compatibility to your existing processes to assure not only ease of use, but also to assure the minimum of interruption to current processes. Utilizing direct application methods security marks can be applied to products or materials either covertly or overtly, dependant on the desired outcome.

### **Integrated Application**

Our Integrated Applications are as the title suggests; our encrypted microparticles are integrated directly into the product or packaging materials as they are produced. No need for adding security features later in the process, it's built in from the beginning!

To develop an integrated application solution Stealth Mark works in partnership with the customer to develop formulations and manufacturing procedures to meet the customer's specific needs. We can integrate our solution into many types of materials such as waxes or proprietary plastics. Contact us to see if your product can utilize this application method.

## **SOLUTIONS**



## Property Protector



Crimestopper Property Protector™ was developed specifically as an easy and effective means for marking and proving positive ownership of possessions and valuables. The residential version consists of a brush-applicator bottle containing a defined grouping of encrypted microparticles suspended in an adhesive solution, creating a unique code within each and every bottle. The solution can be easily applied by placing a small mark of solution to any or all articles giving them their own coded fingerprint; and the code is registered in your name in a secure database. If an item is stolen and recovered the authorities can look up the code and return the item to its rightful owner.

Stealth Mark initially developed Property Protector at the bequest of, and in cooperation with, the Hertfordshire Constabulary in the United Kingdom. In initial product trials the Hertfordshire Constabulary provided each residence in a targeted area with Property Protector to mark their valuable possessions. After doing so, residents registered their items with the Constabulary. The police, equipped with our portable StealthFire™ Reader and Software, were then able to instantly and accurately establish the ownership of recovered assets and return them to their rightful owner



In the trials conducted they reported over a 50% reduction in burglary and were able to apprehend and convict a professional burglar using the Property Protector system. In addition, the stolen property that had been marked was also returned to its rightful owner, a rare event in burglaries.

In early 2009 Property Protector was awarded the prestigious "Secured by Design" certification by the Association of Chief Police Officers.



Secured by Design



Official Police Security Initiative

Property Protector is marketed and sold in the United Kingdom under the **Crimestoppers** brand name and is available directly from the **Stealth Mark Europe™** website. In the United States Property Protector is marketed and sold under the **engimaTAG™** brand name.

## SOLUTIONS

### StealthFire™ Analysis Tools

Marking is only one component of a quality security solution, analysis of the marks for useable data is another, and controlling the access to your security efforts is yet another. Our integrated analytical package provides your organization not only the means for simple, on-the-spot product validation, but also the tools to build and control a complete security program. Define who has access to the system, who controls code or serial number assignments, or limit access only to certain system modules. Complete control over your own security program.

StealthFire™ software has two components. The first is the web-based Secure Application Portal, used to control access and authorities granted within your organization. The second is the PC based Verifier software, used for actual analysis of a mark to return the code represented by the particles within the mark.

- Software

Our hand-held StealthFire™ Reader is a easy to use, custom-built video instrument designed to capture an image of a mark, streaming the data to the software for analysis. Accessory hardware to make analysis easier in circumstances where items are returned to a central location for analysis is also available.

- Hardware

## SOLUTIONS

### StealthFire™ Software

- **Forensic Level Accuracy - Simple and Easy to Use - Authentication Anywhere, Anytime**



## **Secure Application Portal**

Components of the StealthFire™ software suite reside both on Stealth Mark's secure web servers and on customers' PCs with the web-based Secure Application Portal being the 'structure' side of the system. Initial access is granted by Stealth Mark at which point your organization maintains complete control over its security program. Your company determines what personnel are granted:

- Personnel Administrator - The person(s) that control who, within your organization, has access to your security program, and what authority (roles) they will be granted.
- Code or Serial Number Administrator - The person whom assigns codes or serial numbers (dependant on what solution type you purchased) to items, products, suspected diverters, or geographic markets (dependant on what type problem you're trying to address).
- Software Administrator - The person granted permission to download software from the Secure Application Portal to your companies PC's.
- Application Operator - The person that will be using the PC based Verifier to analyze actual marks and return the results. No access grante to the Portal, this role is for use of the Verifier software only.

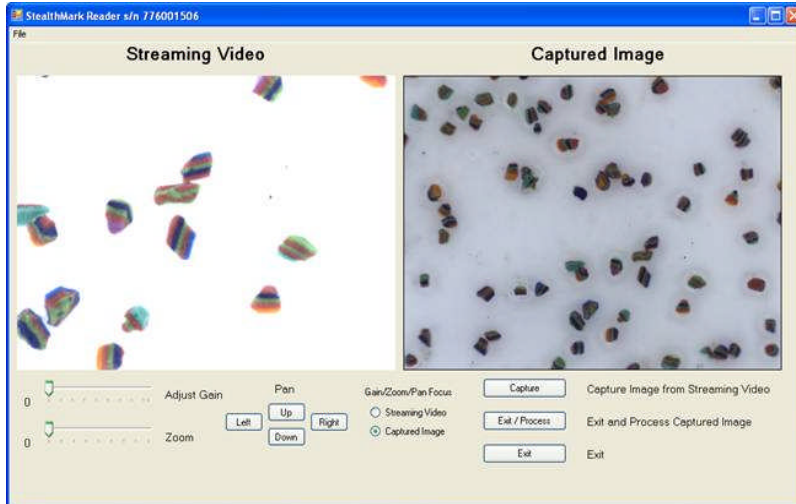
## **Code or Serial Number Verifier**

The PC-based Verifier software, downloaded from the Portal, is the workhorse of the system by receiving image data from the StealthFire™ reader and analyzing that data to provide the user with the represented code. StealthFire™ Verifier software has been designed and tested to provide forensic level support to the Stealth Mark® authentication technologies.

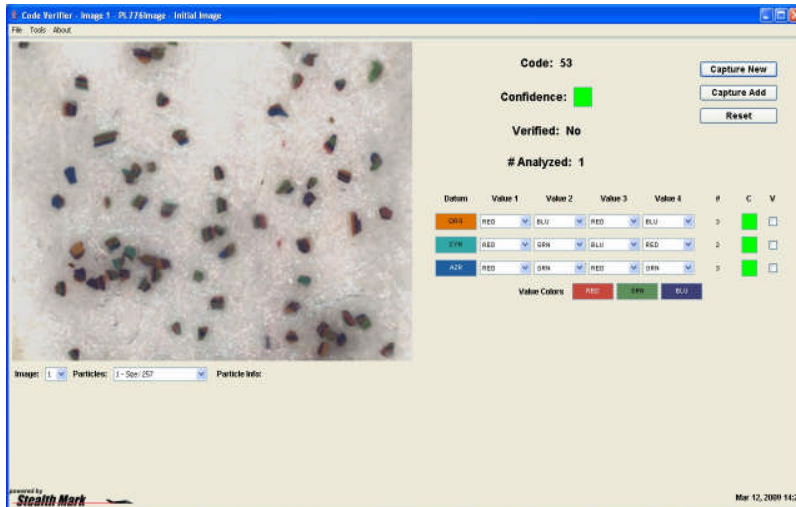
The basic functionality path of the Verifier software is as follows:

- A mark image is captured (via a reader) and the data processed to display the represented code.
- Manual verification and forensic support of a reported code is available if desired.
- When a code is confirmed it is matched to the assignment made in the Portal; proving or disproving the authenticity of the item, or the initial distribution point when tracking diversion.
- Full reporting in PDF format is available for file storage and future evidence if needed.

## **IMAGE CAPTURE**



## CODE CALCULATION



## SOLUTIONS

### StealthFire™ Hardware

#### Reader

The StealthFire™ Reader is an optical device custom designed and fabricated to capture a mark image and live-stream it into our PC-based StealthFire™ software. The Reader provides the interface between the physical mark and the software used to compute the code and provide validation of a microparticle fingerprint.



Our StealthFire™ Reader features include:

- Capture and transmittal of image data from any Stealth Mark® security marks.
- Portability. A handheld unit, it can be used equally well in either the lab or field.
- Industrial build quality, in a unit about the size of a TV remote.
- Programmable capability for use in specific applications.
- The ability to connect to any portable PC (running StealthFire software) via USB 2.0.
- Easy adaptability for installation on production lines.

## Accessories

Use of our reader makes easy work of most situations however there may be certain situations where the supplementary use of other tools may make the job even quicker and easier. To this end we're continue to develop and search for products that make security efforts easier.



- **Reader Stand** - Our stand features a smooth rack & pinion mechanism that allows the Reader to be precisely located on the surface of items where free-hand use of the Reader might be cumbersome. Marks on smaller items such as bottles or fiberboard boxes can be more easily read as the package itself is stabilized by the Stand.
- **Pocket Scope** - In some field audit circumstances full analysis of the mark may not be required, rather just validating that our encrypted microparticles are present is all that's needed. Our Pocket Scope fit's in your pocket, doesn't require power or batteries, comes



in 25x and 50x power versions, and provides a convenient way to verify particles are



present.



## SOLUTIONS

### Stealth Mark<sup>®</sup> Consulting Services

Each of our authentication solutions draws upon a set of common components; the microparticle mark, the code represented by the mark, and our StealthFire<sup>™</sup> reader & software suite. Engineering these components into the specific solution that meets your needs is a collaborative effort.

We understand that your organization, at times, can be time-starved and resource-strapped. You may be unable to allocate sufficient resources of your own to the process and system engineering work needed to co-create an effective solution.

Stealth Mark<sup>®</sup> Consulting Services can provide you with professional consultants, experienced in the various aspects of designing and implementing our authentication solutions to assist you in these efforts.

For example, we begin by defining the problem to be solved and formulate solution requirements around questions such as:



- What level of security is desired? Do you need basic microparticle encryption or a unique “fingerprint” for every item?
- Should the authentication marking be covert or overt? Do you want people to be aware that the article is protected or not?
- What is the best way to physically apply the mark to the articles you need to protect? Can one of our standard marking products be used or does the situation require a customized solution?
- To what extent does authentication need to be employed? Do you need to mark all of your products, a statistical sample of products, or just a targeted sample?
- Is there a need to integrate our StealthFire™ software with your own IT systems, such a shop floor control system, or ERP system?
- How will you audit for compliance? Will you use in-house or in the field, on an exception basis or a routine basis using statistical or targeted samples?

These requirements then drive the engineering work needed to craft an authentication solution from Stealth Mark that is right for you.

Working with your subject matter experts, we lead the design engineering work. This includes determining the number of unique Stealth Mark® codes you need, the best encryption approach to take, the physical amount of marking materials required, and also what is required in terms of StealthFire™ software and readers.

We go further with your subject matter experts to aid in any process engineering and system engineering work that may be required. The process engineering work includes developing the best way to physically apply the marks and to integrate it into your manufacturing, packaging, and/or shipping processes.

This process engineering work also includes developing the best way to audit for compliance. System engineering work may be required if you wish to integrate StealthFire™ software with any of your existing IT systems.

Again, because many companies are time-starved and resource-strapped, they are unable to allocate sufficient resources of their own to this engineering work. Regardless of circumstances, Stealth Mark® Consulting Services is ready to help.